



ԳՆՆԸՆՈՒՄՆԵՐՆԵՐԻ ARCTIC UAV

Professional Aerial Drone Imagery
ԳՆՆԸՆՈՒՄՆԵՐՆԵՐԻ ՎԵՐԱՆՈՒՄ



ARCTIC UAV

Arctic UAV CEO Kirt Ejesiak with the Ukpik Wingcopter 178 HL.



Letter from CEO:

Welcome to Arctic UAV — an Iqaluit, Nunavut based UAV Service Provider. We offer world class aerial imaging services with locally trained UAV operators.

We also offer UAS companies to test the limits of their UAV systems. *'If it works in the Arctic it'll work anywhere'* is the old adage.

We're honoured to be given an opportunity to lead in the BVLOS space for the rest of Canada and Circumpolar countries. Stay tuned on our progress on this one of a kind project.

Contact us to solve your problem using UAVs, be it small, large, simple or complex — we've done it before without incident with our highly trained and skilled UAV operators.

You have my commitment to provide a professional service with this exciting new solution to many common Arctic problems.

Kirt Ejesiak, Chairperson & CEO

Arctic UAV Inc. is a 100% Indigenous owned, Nunavut based company.

Arctic UAV Inc. captures aerial data and imagery using UAVs for film, photo and video. We are leading in Canada in providing UAV Services using suitable platforms to meet our customers needs.

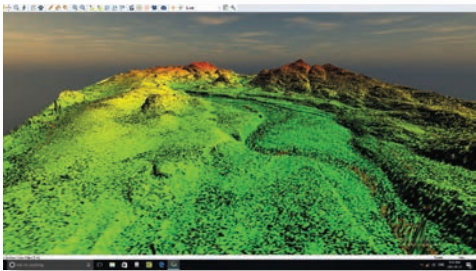
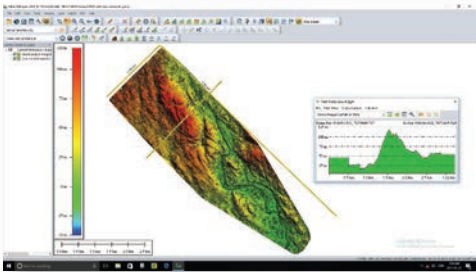
Our Credentials:

- Extensive pilot training (special flight operations, UAV type training)
- All pilots are certified UAV Operators under Transport Canada Guidelines
- Arctic UAV has secured SFOC and Insurance
- We use commercial grade UAVs & cameras
- Strong senior team
- Capable of handling complex projects

Our customers include:

- Transport Canada, Government of Nunavut, First Air, Stantec, EXP, QC, CBC, NHK, Department of Fisheries & Oceans, & many more.

Arctic UAV Inc. specializes in building teams to do complex projects such as surveying, mapping, environmental conservation, aerial photography, search and rescue, site surveys, research, infrastructure inspection, security surveillance, weather tracking, wildlife conservation, and more...





BVLOS MISSIONS

WINGCOPTER 178 HL — A TC Safety Assured RPAS.

The Wingcopter 178 is a robust, powerful electric fixed-wing eVTOL with an empty weight of 5.6 kg and 4 kg capacity for payload and batteries. It is designed as an effective combination between a fixed-wing aircraft and a multicopter so that it can be vertically launched and landed anywhere. At the same time, this combination allows longer flight times and longer ranges than traditional UAVs.

Thanks to the new aerodynamic design and the innovative tiltrotors, the Wingcopter remains stable in the air in any weather condition. The Wingcopter offers autonomous intuitive control for take off and landing as well as for flying over long distances.



High payload capacity



High speed



Lightweight



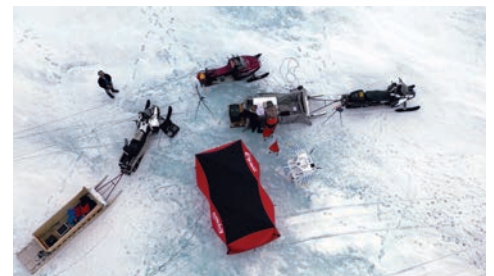
Long range



Rainproof



Wind resistant



Technical details:

External dimensions

178 cm x 132 cm x 52 cm

Flight time

up to 120 minutes (fixed-wing mode)

Speed (multicopter mode)

min. 0 km/h; max. 50 km/h

Range

up to 100 km (fixed-wing mode)

Rate of climb

up to 6 m/s

Altitude

max. 5000 m

Wind resistant

up to 15 m/s

Payload

Wingcopter 178: max. 2000 g
Wingcopter 178 Heavy Lift: max. 6000 g

Maximum take off weight (MTOW)

Wingcopter 178: 9.6 kg (including payload and batteries)
Wingcopter 178 Heavy Lift: 16kg (including payload and batteries)

Construction

Composite (fibreglass and carbon fiber)

Remote control

Tablet / ground control + software + radio controller

Flight modes

Manual and autonomous

Drive

Electric



Clearwater and Bruce Head BVLOS Mission

Missions conducted at latitudes of 66°N and 72°N

- Flew the Wingcopter 178 Heavy Lift (HL) RPAS up to an altitude of 450 m and at a range of 8 km from our ground control station.
- Included a 1600 km boat trip to mission area.
- Wind conditions of up to 10 m/s.
- Arctic UAV ew a minimum of 20 missions with a total distance of about 500 km
- Locally trained pilots flew the 2 BVLOS missions.

Mission Coverage

with given ground sample distance.

200 hectares at 1.2 cm GSD

300 hectares at 2.0 cm GSD

500 hectares at 5.0 cm GSD

Sensors:

- Nikon D850 (with a Zeiss Milvus 21mm lens)
 - Sony A7 (with Zeiss Batis 2.5m lens)
 - Wiris Security 30X EO & Thermal Camera
 - Yellowscan Surveyor Ultra
- *Your Payload (Customized up to 6 kg)*



Yellowscan Surveyor Ultra



Zeiss Milvus 21mm lens



Zeiss Batis 2.5m lens

